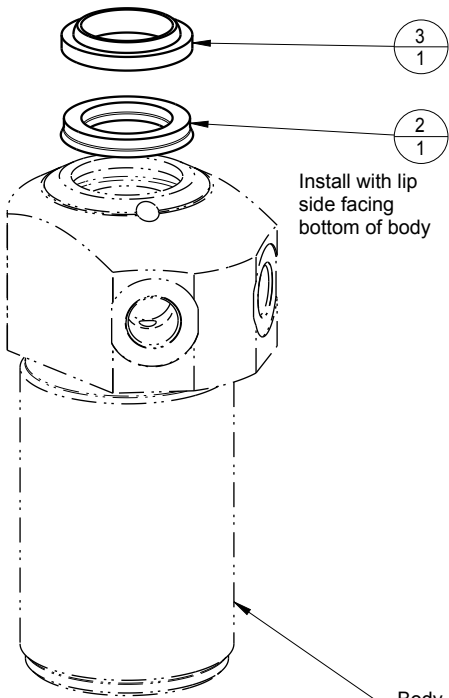


1

2

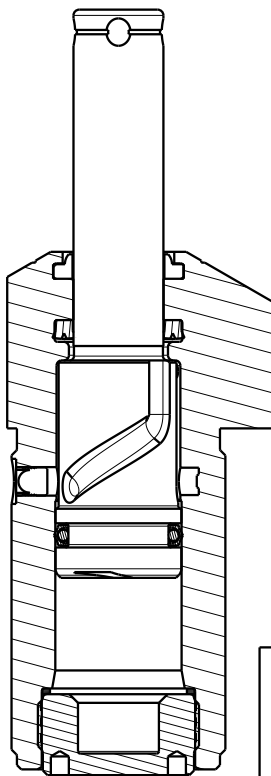
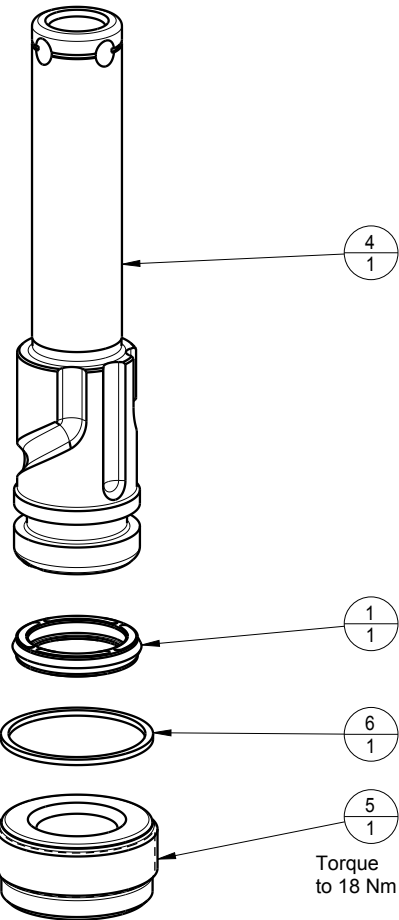


NO	QTY	PART NO	DESCRIPTION	STD SEAL KIT	FKM SEAL KIT
1	1	39010018	SEAL,CROWN,11/16x7/8x5/32	X	39V10018
2	1	39010020	SEAL,BEVEL W/WHEEL INSERT,5/8 x 1/8 x 7/8	X	39V10020
3	1	39053001	WIPER,SNAP-IN, (5/8)	X	X
4	1	47510900	PLUNGER, SC, 4.9 KN		
5	1	81530901	RETAINER, SC, 1100		
6	1	39T55002	GASKET,(-021)	X	X
N/A	N/A	46250201	KIT, SEAL, CYL, PP, TB, DA, 13.3KN	NOTED	N/A
N/A	N/A	6V250204	KIT, SEAL, CYL, PP, TB, DA, 13.3KN, FKM	N/A	NOTED




Lubricate all seals with clean hydraulic fluid prior to assembly

Body Not Replaceable



SECTION A-A

PARTS LIST		
	VEKTEK, INC. 1334 E. SIXTH AVE. P.O. BOX 625 EMPORIA, KS. 66801 U.S.A.	
ASSEMBLIES AFFECTED	PARTS LIST, ASSY, CYL, PP, TB, 13.3KN	
42-5020-91	SIZE A	REV B
	MPL2112	

B	3297	RELEASE	GAR	8/8/17
REV	IN ACCORDANCE WITH ECN	EFFECTIVE DATE	REVISED BY	DATE
DRW BY: MAJ	DRAWING STATUS: Released			
DATE: 5-8-17	PRODUCTION APPROVED FOR RELEASED STATUS ONLY			

1

2

FORM FEG035_PL_ASIZE, REV. B

SHEET 1 OF 1